

State of Wyoming Corner Record

(In compliance with the **CORNER PERPETUATION AND FILING ACT**, Wyoming Statutes, 1997 Section 33-29-140 et. seq., and the Rules and Regulations of the Board of Professional Engineers and Professional Land Surveyors)

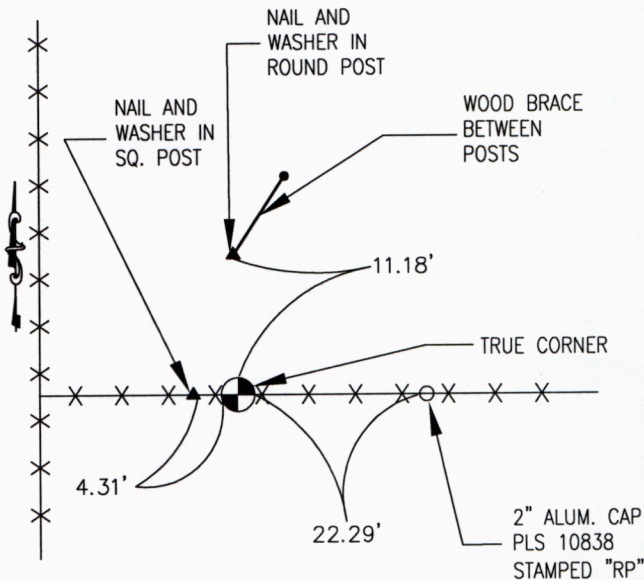
Reverse side of this form may be used if more space is needed.

Record of original survey and citation of source of historical information (if corner is lost or obliterated). Description of corner monumentation evidence found and/or monument and accessories established to perpetuate the location of this corner. Sketch of relative location of monument, accessories, and reference points with course and distance to adjacent corner(s) (if determined in this survey). Method and rationale for reestablishment of lost or obliterated corner.

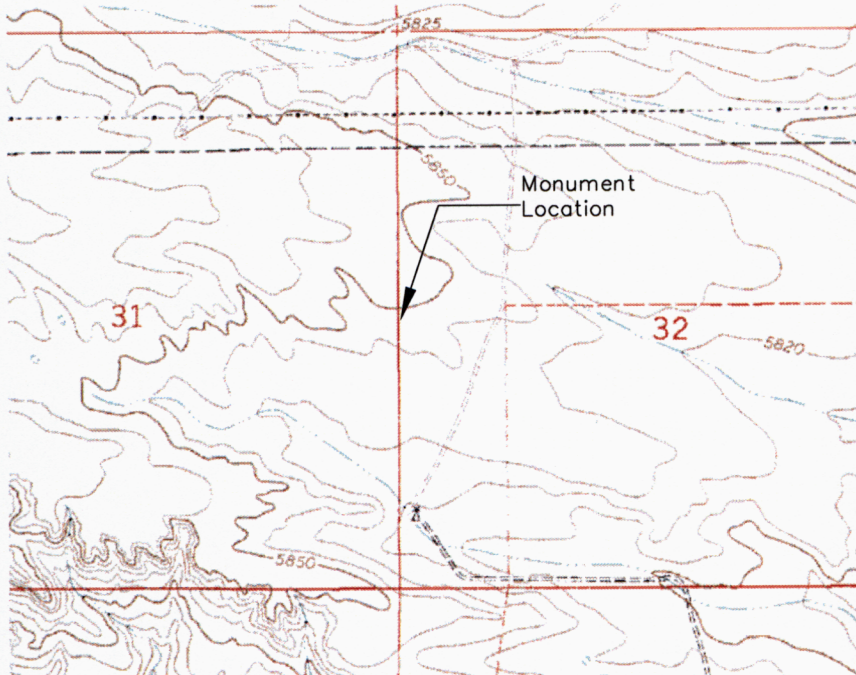
FOUND: 1/2" REBAR AS SHOWN IN MONUMENT RECORD BY JOHN A. STEIL (PLS. 2500) PAGE NO. 1983, BOOK NO. 1259 (CERTIFIED LAND CORNER RECORDATION FILES) DATED MAY 5, 1988. PLASTIC CAP IS GONE, EVIDENCE OF CRUSHED RED SANDSTONE STILL VISIBLE. NEW FENCE LINES AS SHOWN.

TIES: S00° 27' 06"E, 2608.65' TO SE 31
N00° 16' 10"E, 2635.21' TO NE 31

SET: A 3/4" ALUM. CAP ON A 3/4" X 30" REBAR, STAMPED AVI PC WY PLS. NO. 10838, MARKED APPROPRIATELY. REPLACED 1/2" REBAR AS NOTED ABOVE WITH UPGRADED MONUMENT. SET REFERENCE POINTS AS SHOWN.



Location Sketch



Monument location



Monument Inscription

Date of Field Work: 7/2/07

Office Reference: 2807

Cross Index Plat

	1	2	3	4	5	6	7	8	9	10	11	12	13	14	15	16	17	18	19	20	21	22	23	24	25		
A																											A
B		6	5	4	3	2	1																				B
C																											C
D																											D
E																											E
F																											F
G		7	8	9	10	11	12																				G
H																											H
J																											J
K																											K
L		18	17	16	15	14	13																				L
M																											M
N																											N
O																											O
P		19	20	21	22	23	24																				P
Q																											Q
R																											R
S																											S
T		30	29	28	27	26	25																				T
U																											U
V																											V
W																											W
X		31	32	33	34	35	36																				X
Y																											Y
Z																											Z

Corner Name East 1/4 Corner Section 31, T 14 N, R 64 W, 6th P.M.

Cross-Index No.: X-5

County: LARAMIE Wyoming

SBRPEPLS/PLSW: March 1994; PLSW January 1998

Firm/Agency, Address

AVI P.C.
2035 WESTLAND RD.
CHEYENNE, WY. 82001

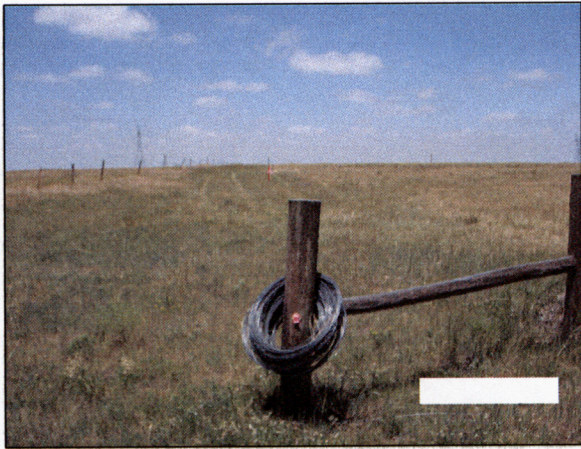
This corner record was prepared by me or under my direction and supervision.

SEAL & SIGNATURE

Telephone Number: 307-637-6017



RECORDED 10/31/2007 AT 9:20 AM REC# 486882 X# 2031 PG# 1088
 DEBRA K. LATHROP, CLERK OF LARAMIE COUNTY, WY PAGE 1 OF 2



View North



View East

RECORDED 10/31/2007 AT 9:20 AM REC# 486882 JK# 2031 PG# 1089
DEBRA K. LATHROP, CLERK OF LARAMIE COUNTY, WY PAGE 2 OF 2



View South



View West